



National Science Foundation  
WHERE DISCOVERIES BEGIN

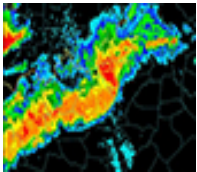
---

## News From the Field

# New IST research leverages big data to predict severe weather

---

June 21, 2017



Every year, severe weather endangers millions of people and causes billions of dollars in damage worldwide. But new research from Penn State's College of Information Sciences and Technology (IST) and AccuWeather has found a way to better predict some of these threats by harnessing the power of big data. [Full Story \(/cgi-bin/good-bye?http://news.psu.edu/story/472521/2017/06/21/research/new-ist-research-leverages-big-data-predict-severe-weather\)](http://news.psu.edu/story/472521/2017/06/21/research/new-ist-research-leverages-big-data-predict-severe-weather)

## Source

The Pennsylvania State University

---

*The National Science Foundation (NSF) is an independent federal agency that supports fundamental research and education across all fields of science and engineering. In fiscal year (FY) 2017, its budget is \$7.5 billion. NSF funds reach all 50 states through grants to nearly 2,000 colleges, universities and other institutions. Each year, NSF receives more than 48,000 competitive proposals for funding and makes about 12,000 new funding awards.*

[✉ Get News Updates by Email <http://service.govdelivery.com/service/subscribe.html?code=USNSF\\_51>](http://service.govdelivery.com/service/subscribe.html?code=USNSF_51)

## Useful NSF Web Sites:

NSF Home Page: <https://www.nsf.gov> <<https://www.nsf.gov>>

NSF News: <https://www.nsf.gov/news/> (/news/)

For the News Media: <https://www.nsf.gov/news/newsroom.jsp> (/news/newsroom.jsp)

Science and Engineering Statistics: <https://www.nsf.gov/statistics/> (/statistics/)

Awards Searches: <https://www.nsf.gov/awardsearch/> (/awardsearch/)

National Science Foundation, 4201 Wilson Boulevard, Arlington, Virginia 22230, USA Tel:  
(703) 292-5111, FIRS: (800) 877-8339 | TDD: (800) 281-8749